

UPASS Data Report



Stanford 9

Utah Core Assessments



Alpine School District
2003

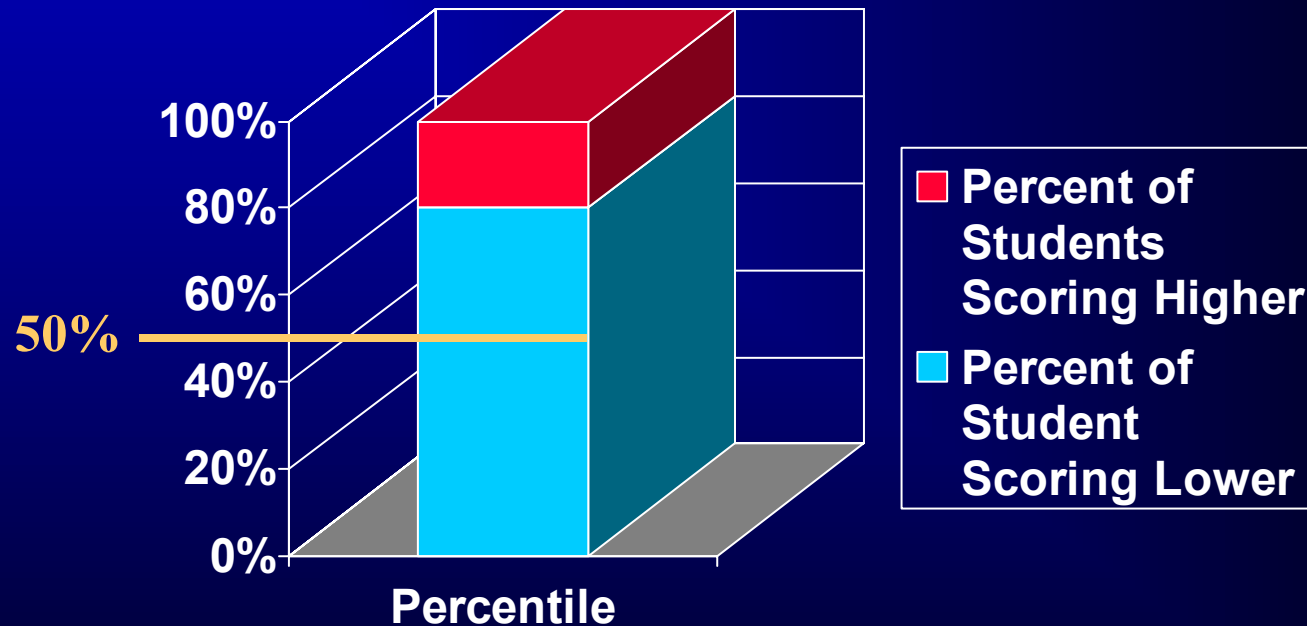
Stanford 9

Norm Referenced

- *Useful for large scale evaluation: state, district and school.*
- *Not totally aligned with state curriculum.*
- *Compares performance relative to others.*

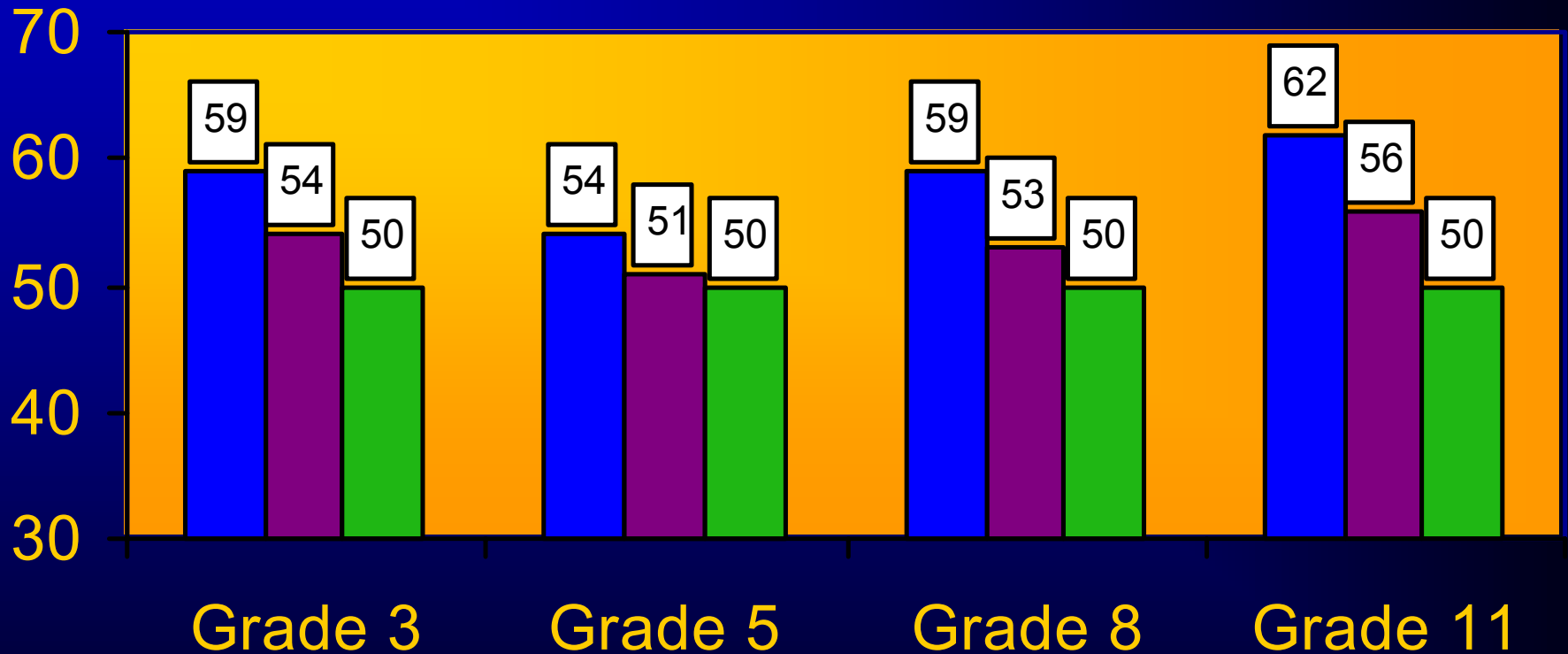
Stanford Scoring

Stanford percentiles: What does 80 mean?



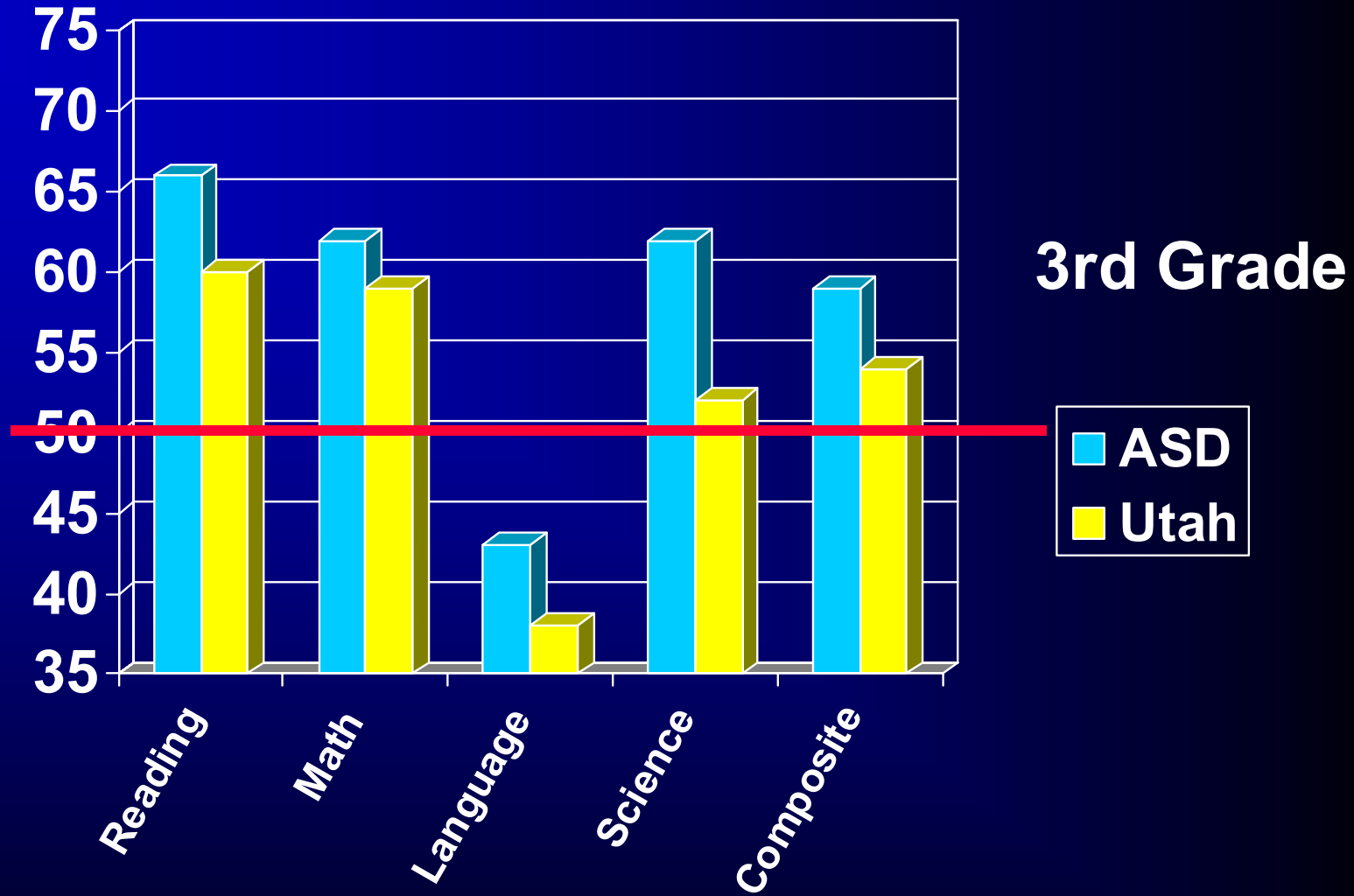
The National average by definition is always 50.

Stanford Composite Scores

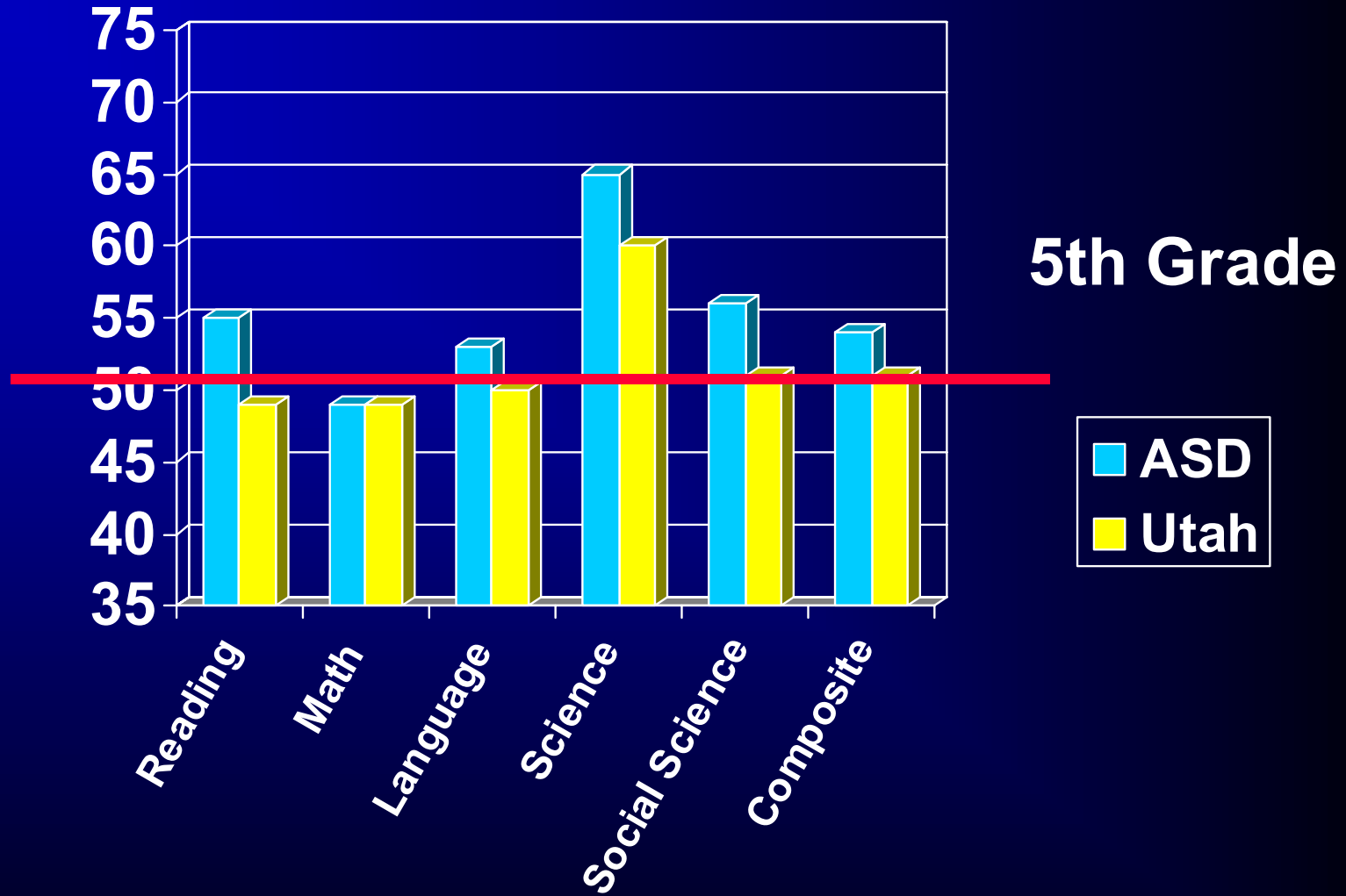


■ Alpine ■ Utah ■ U.S.

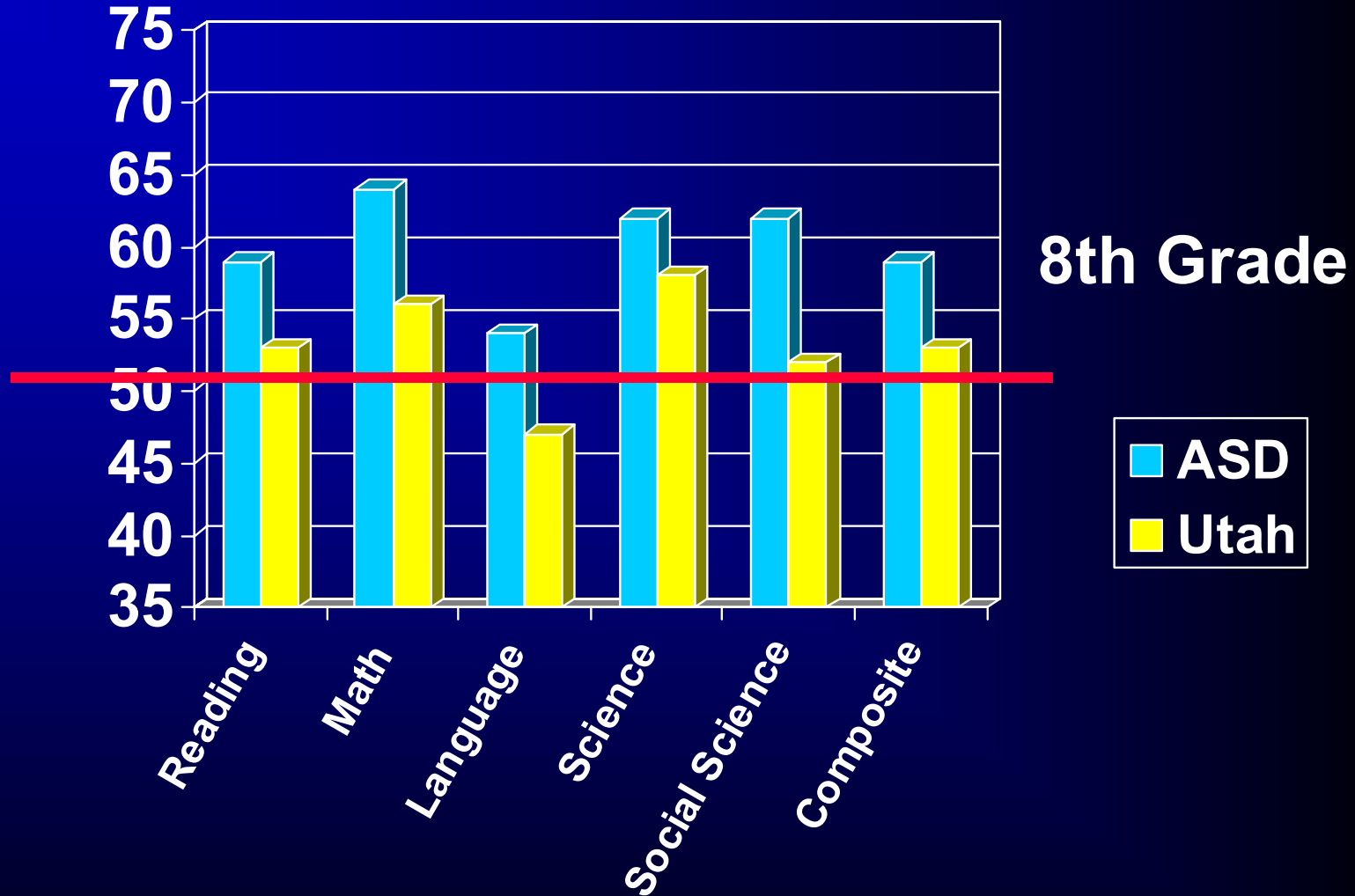
Subject Scores



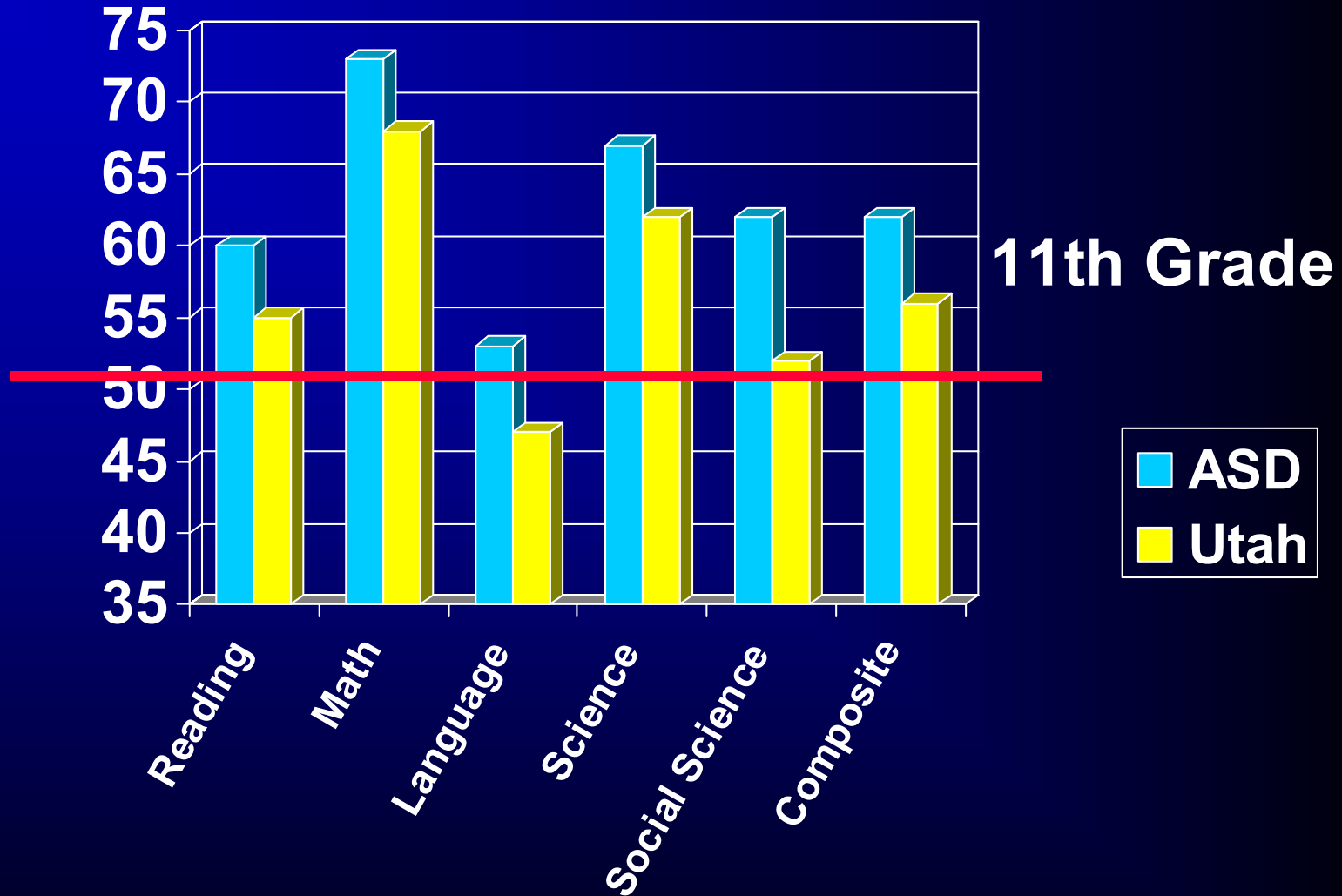
Subject Scores



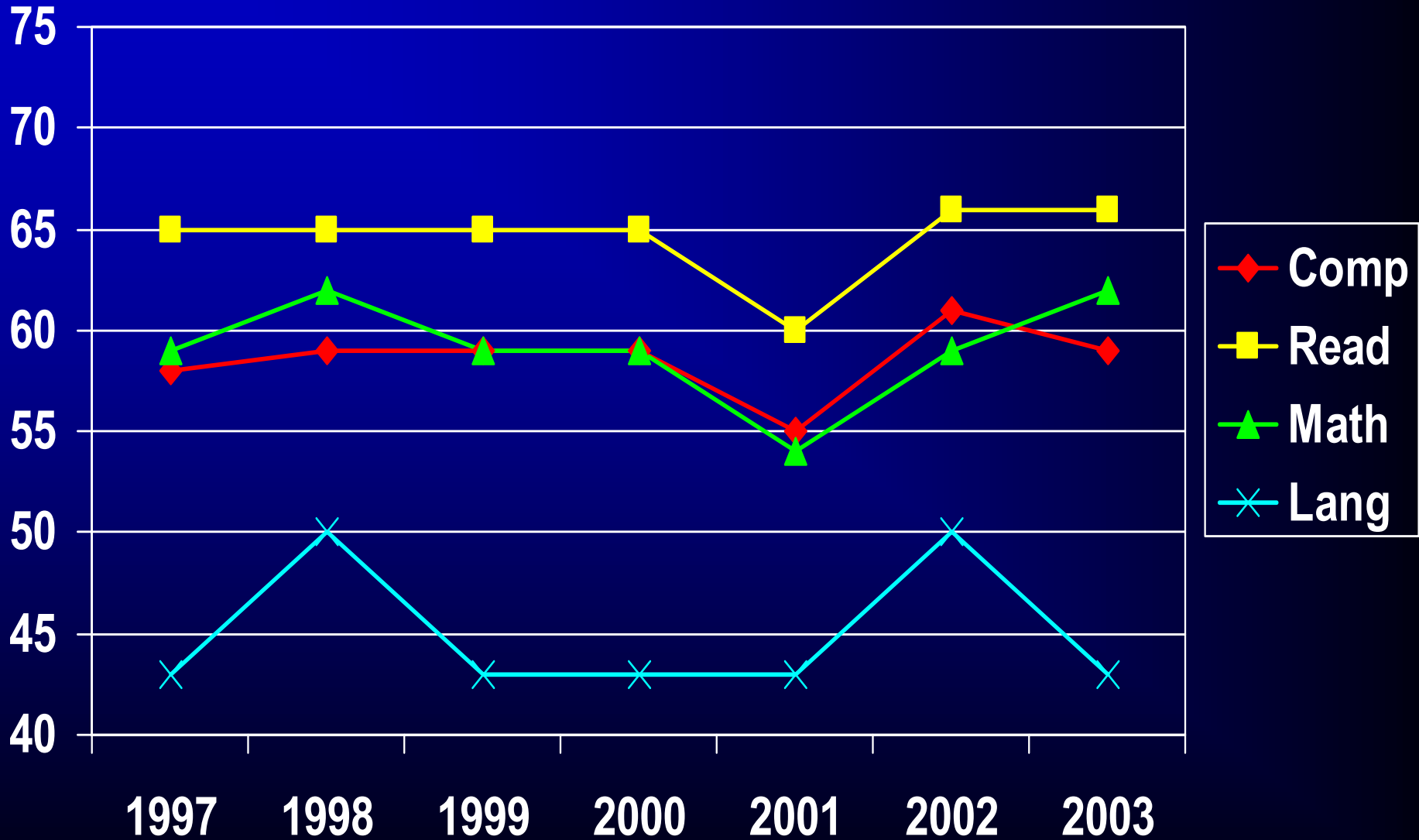
Subject Scores



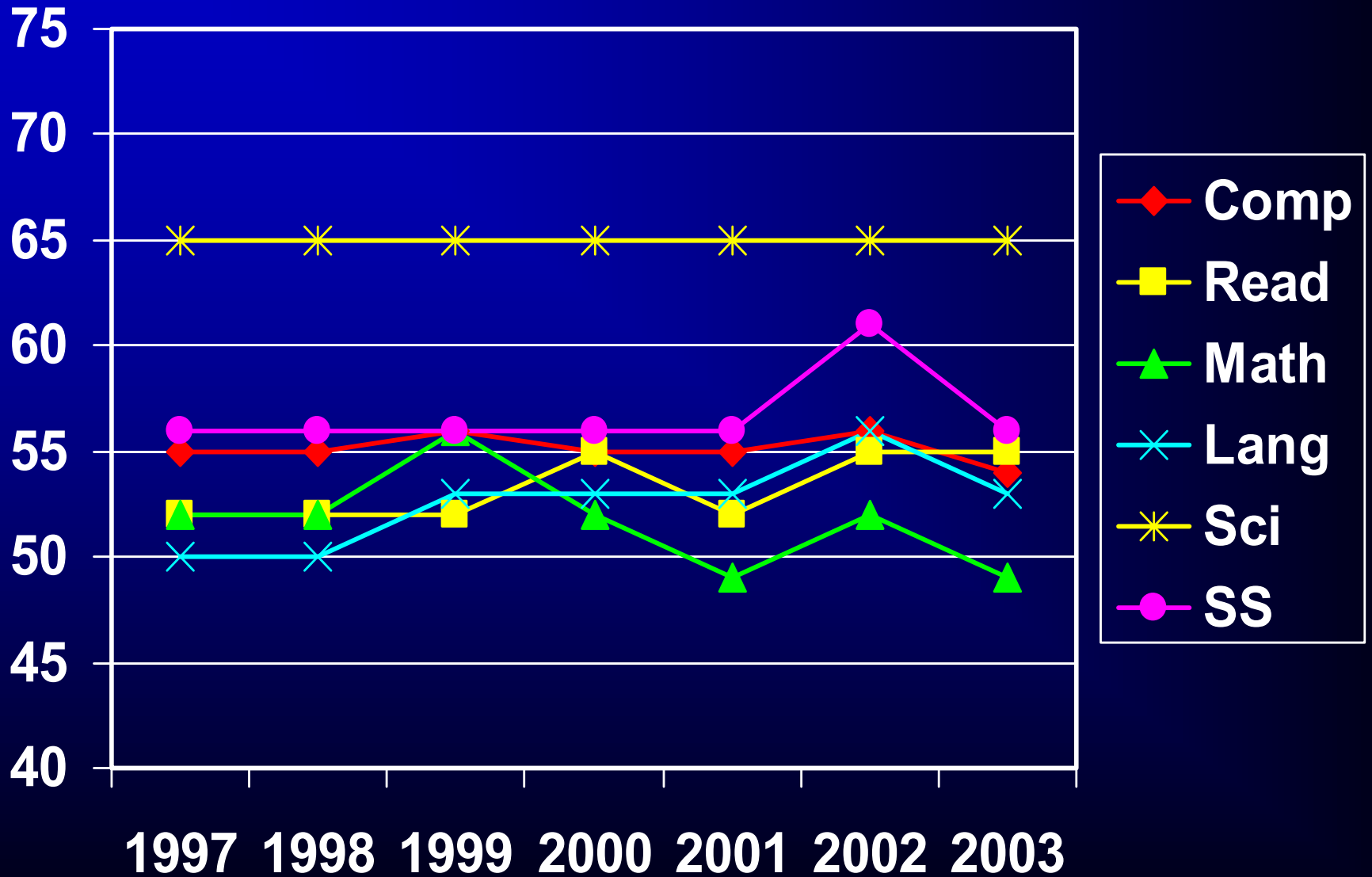
Subject Scores



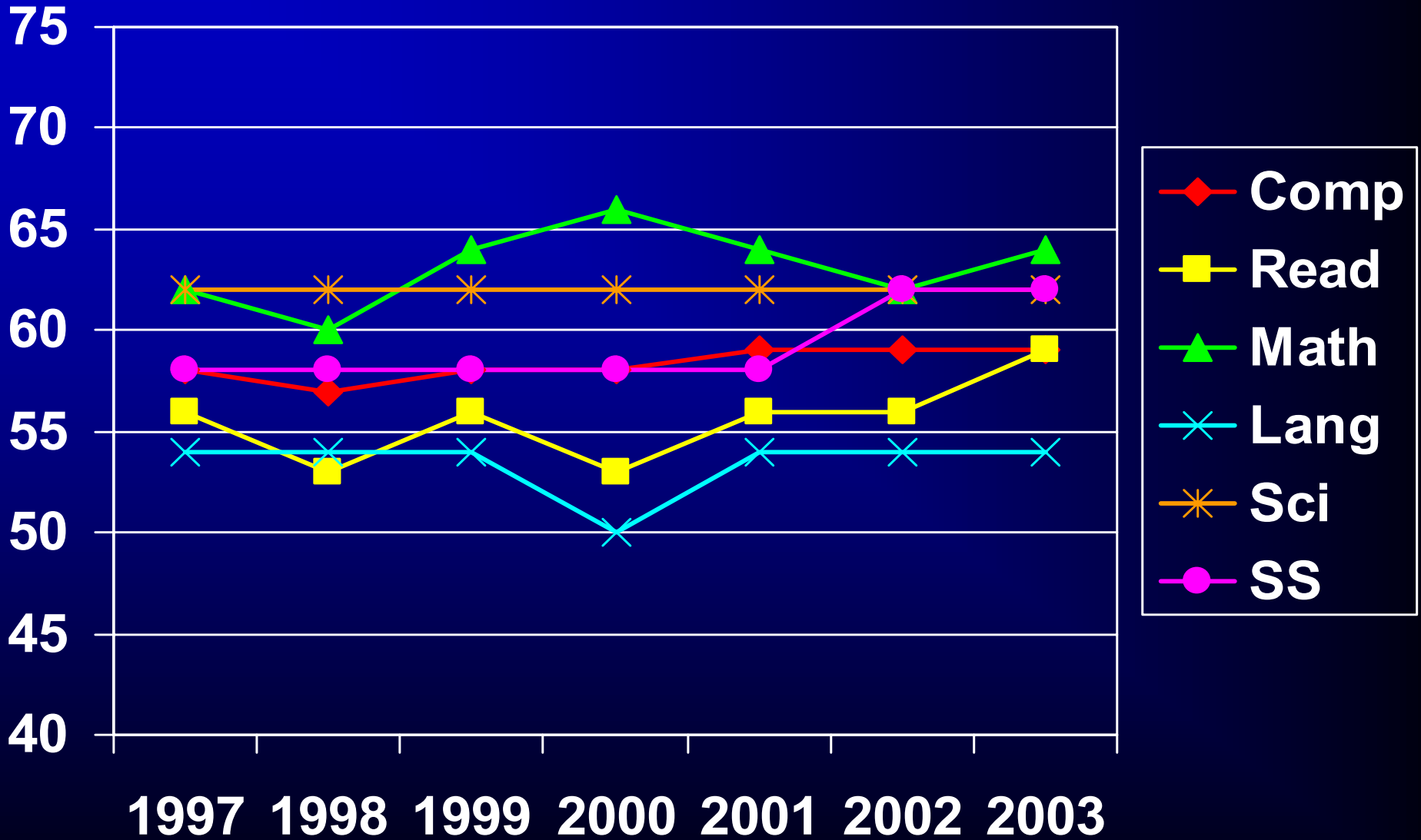
Third grade: 7-year trend



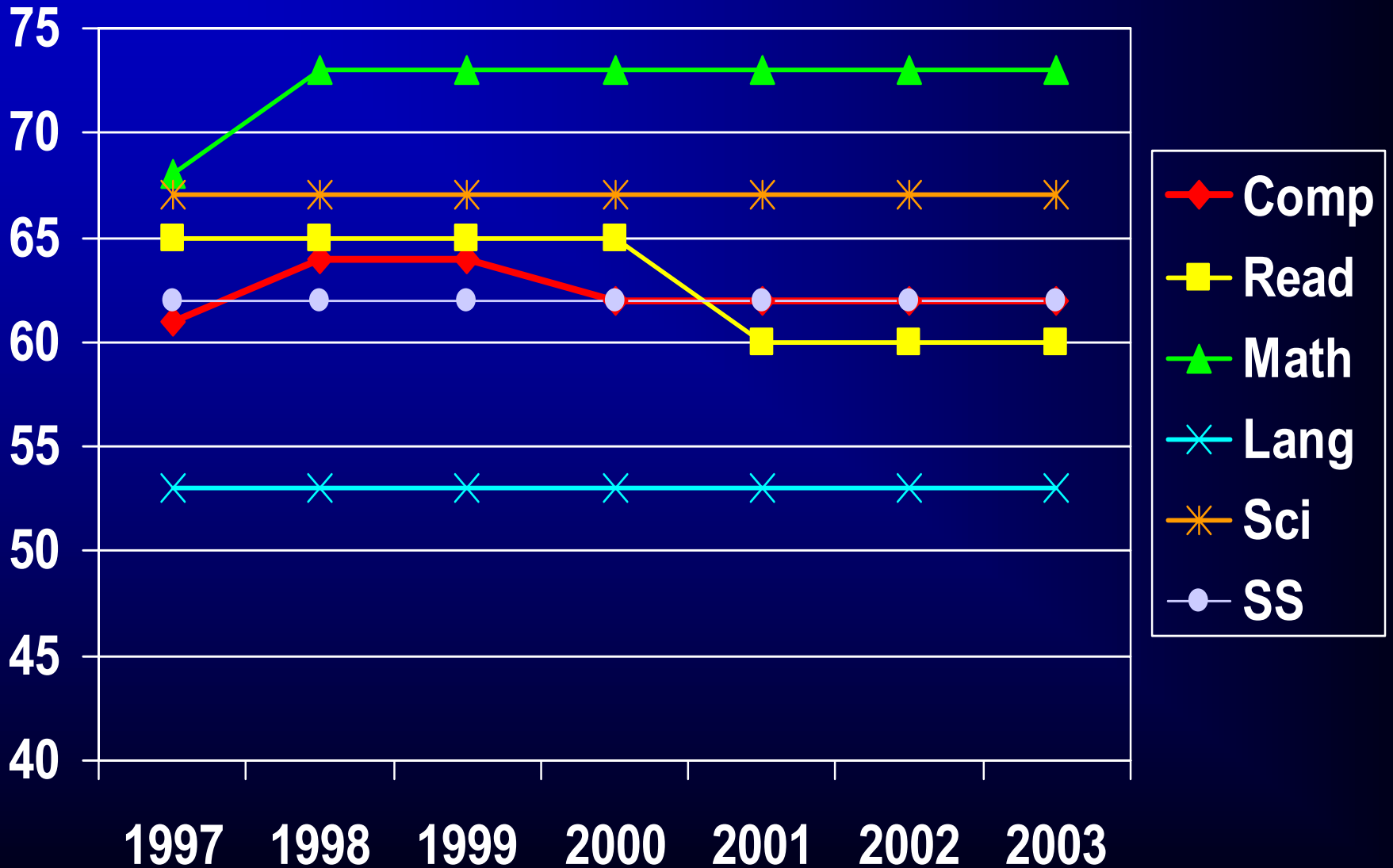
Fifth grade: 7-year trend



Eighth grade: 7-year trend



Eleventh grade: 7-year trend



Utah Core Assessments

Elementary

- language arts, math, science

Secondary

- language arts, math, science

Utah Core Assessment Scoring

Criterion referenced

- compares students against the state core

Competency levels

- established by the USOE
- Used to calculate “No Child Left Behind” AYP reports

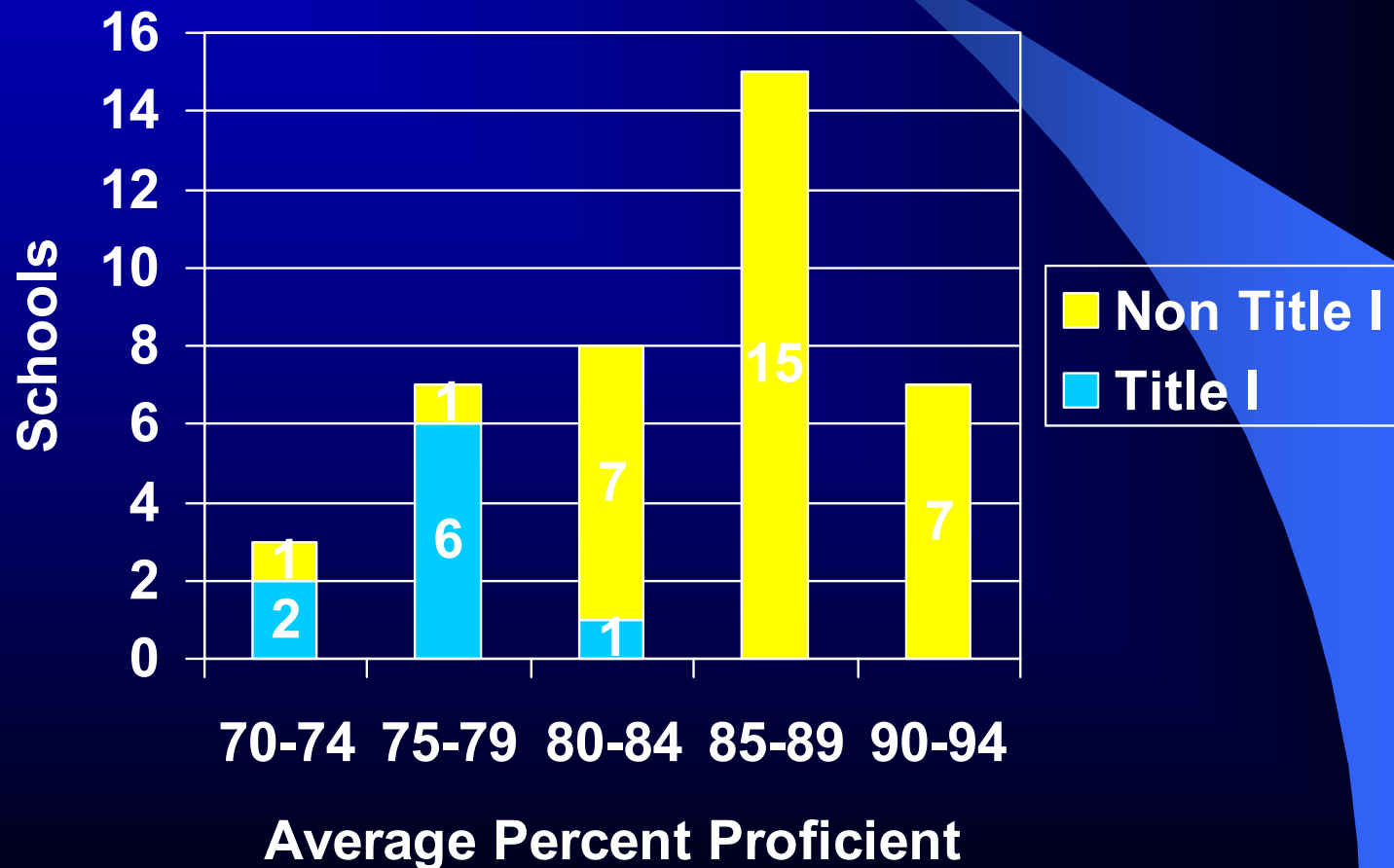
**E
L
E
M
E
N
T
A
R
Y

L
A
N
G
U
A
G
E

A
R
T
S**

Grade		Minimal	Partial	Near	Mastery	%Pass
1	ASD	.6	11	32	57	89
	Utah	1	12	31	57	88
2	ASD	.4	6	10	84	94
	Utah	.4	6	10	83	93
3	ASD	2	16	36	46	82
	Utah	2	20	37	40	77
4	ASD	3	14	32	51	83
	Utah	4	18	33	45	78
5	ASD	1	14	32	53	84
	Utah	2	21	33	45	78
6	ASD	1	19	26	54	80
	Utah	2	27	27	45	72
NCLB 3 rd -6 th	ASD	2	16	32	51	83
	NCLB AYP Goal = 65%					

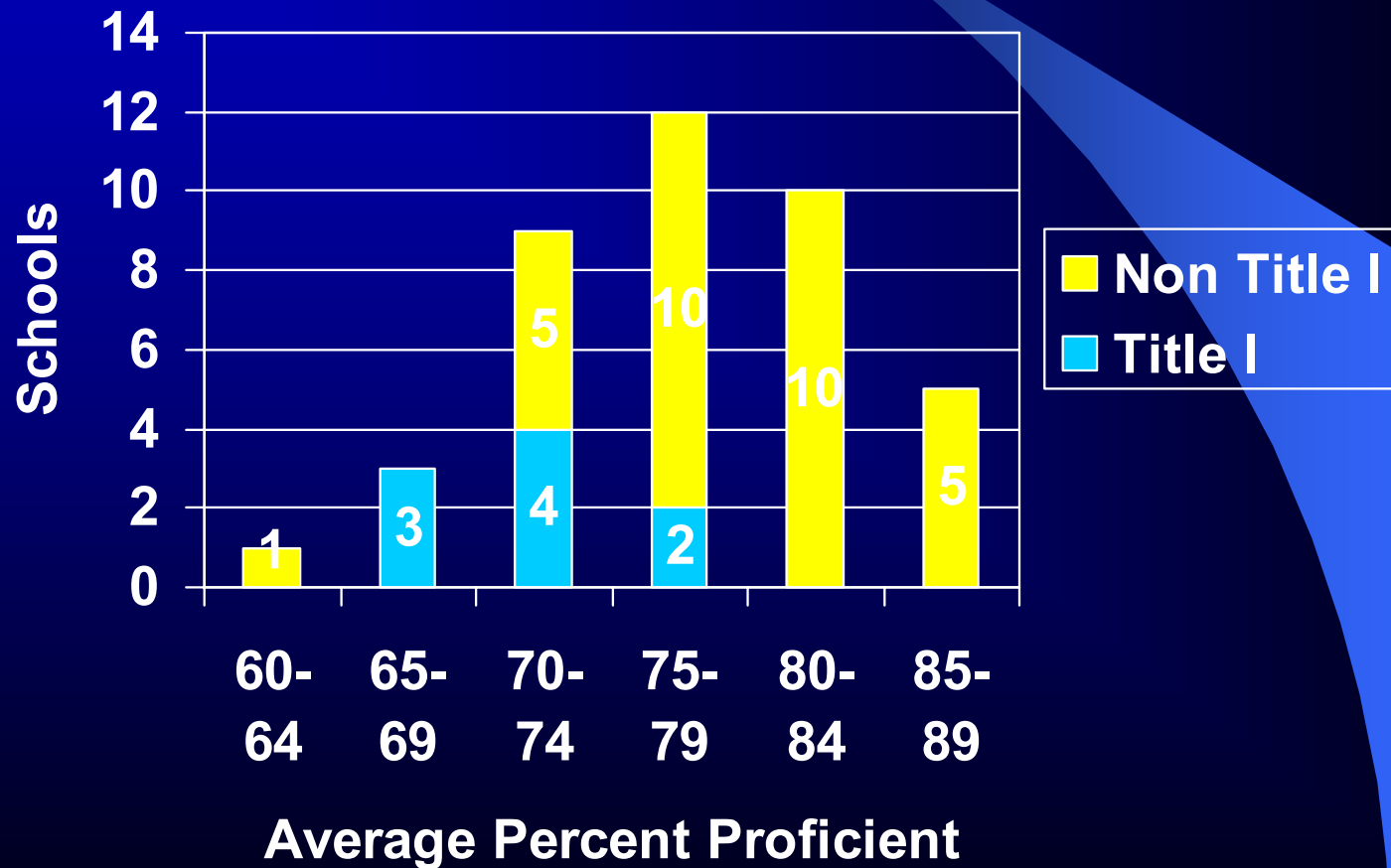
School Distribution— Elementary Language Arts



**E
L
E
M
E
N
T
A
R
Y
M
A
T
H**

Grade		Minimal	Partial	Near	Mastery	%Pass
1	ASD	.4	8	22	70	92
	Utah	.4	8	20	72	92
2	ASD	.3	7	25	68	93
	Utah	.3	6	26	68	94
3	ASD	3	25	36	37	73
	Utah	3	24	33	40	73
4	ASD	2	27	21	51	72
	Utah	2	25	21	52	73
5	ASD	2	23	25	50	75
	Utah	3	25	24	48	72
6	ASD	2	33	28	38	65
	Utah	3	35	26	36	62
NCLB 3 rd -6 th	ASD	2	27	27	44	71
	NCLB AYP Goal = 57%					

School Distribution— Elementary Math



**E
L
E
M
E
N
T
A
R
Y

S
C
I
E
N
C
E**

Grade		Minimal	Partial	Near	Mastery	%Pass
4	ASD	9	14	17	60	77
	Utah	11	16	18	54	72
5	ASD	10	17	23	51	73
	Utah	13	20	22	45	67
6	ASD	13	14	16	57	73
	Utah	19	16	15	50	65

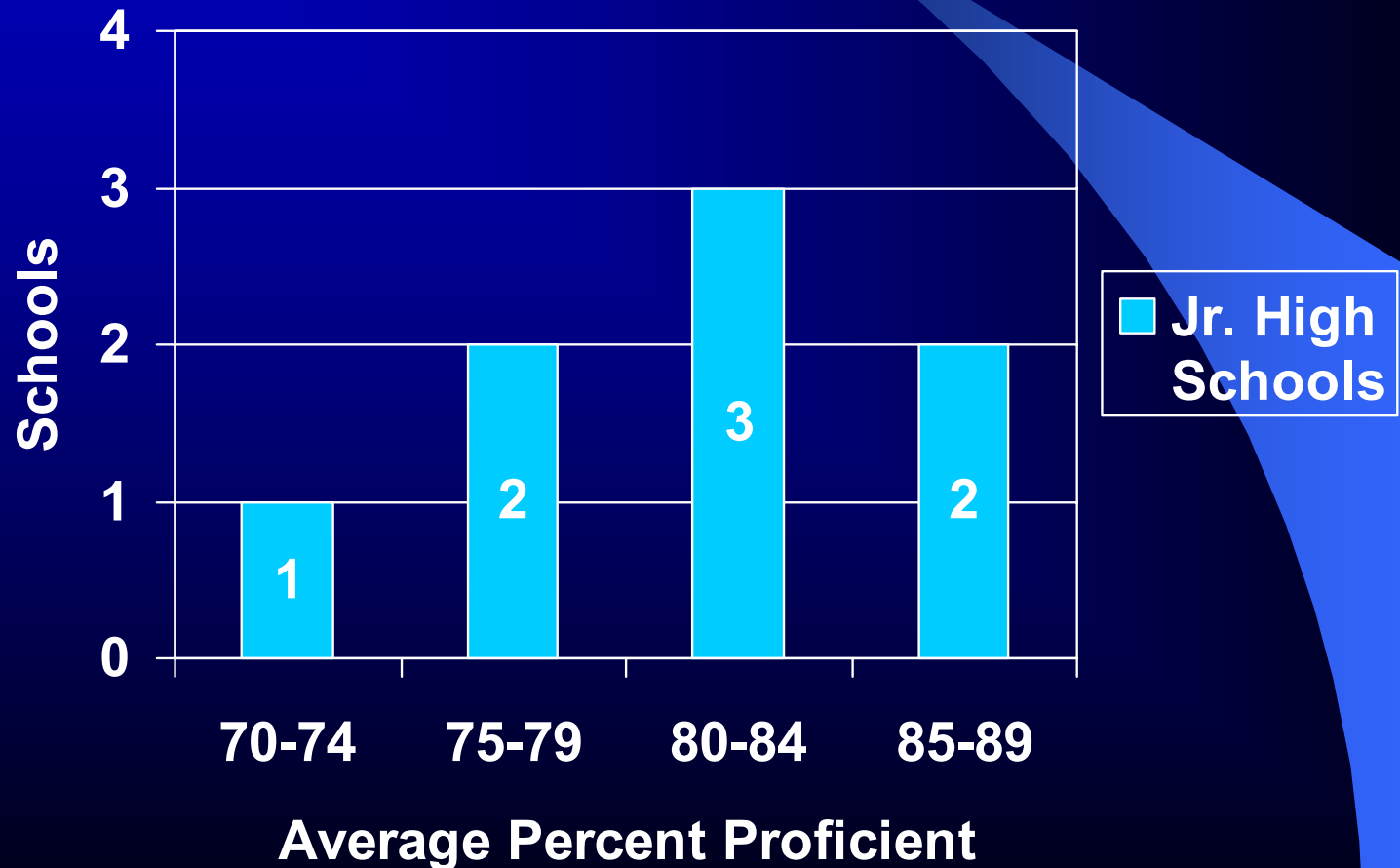
**S
E
C
O
N
D
A
R
Y

L
A
N
G
U
A
G
E

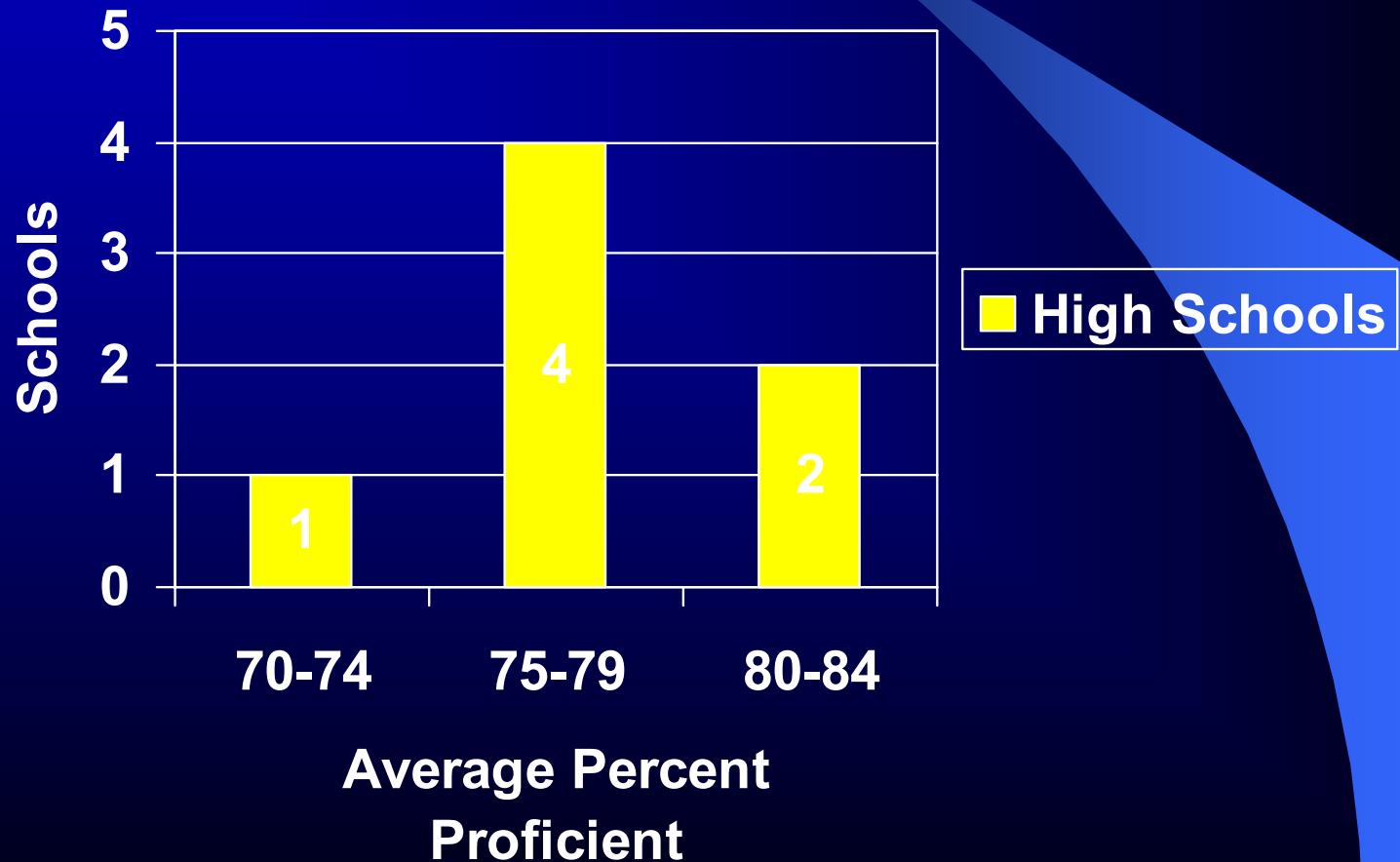
A
R
T
S**

Grade		Minimal	Partial	Near	Mastery	%Pass
7th	ASD	7	7	21	64	85
	Utah	6	11	24	59	82
8th	ASD	4	23	40	34	74
	Utah	8	25	37	30	67
9th	ASD	6	10	30	54	84
	Utah	12	12	30	46	76
7 th and 8 th NCLB	ASD	6	15	30	49	79
	NCLB AYP Goal = 65%					
10th	ASD	12	10	19	59	78
	Utah	14	13	20	54	74
NCLB AYP Goal = 64%						
11th	ASD	14	8	24	54	78
	Utah	15	12	27	46	73

School Distribution— Junior High Language Arts



School Distribution— High School Language Arts

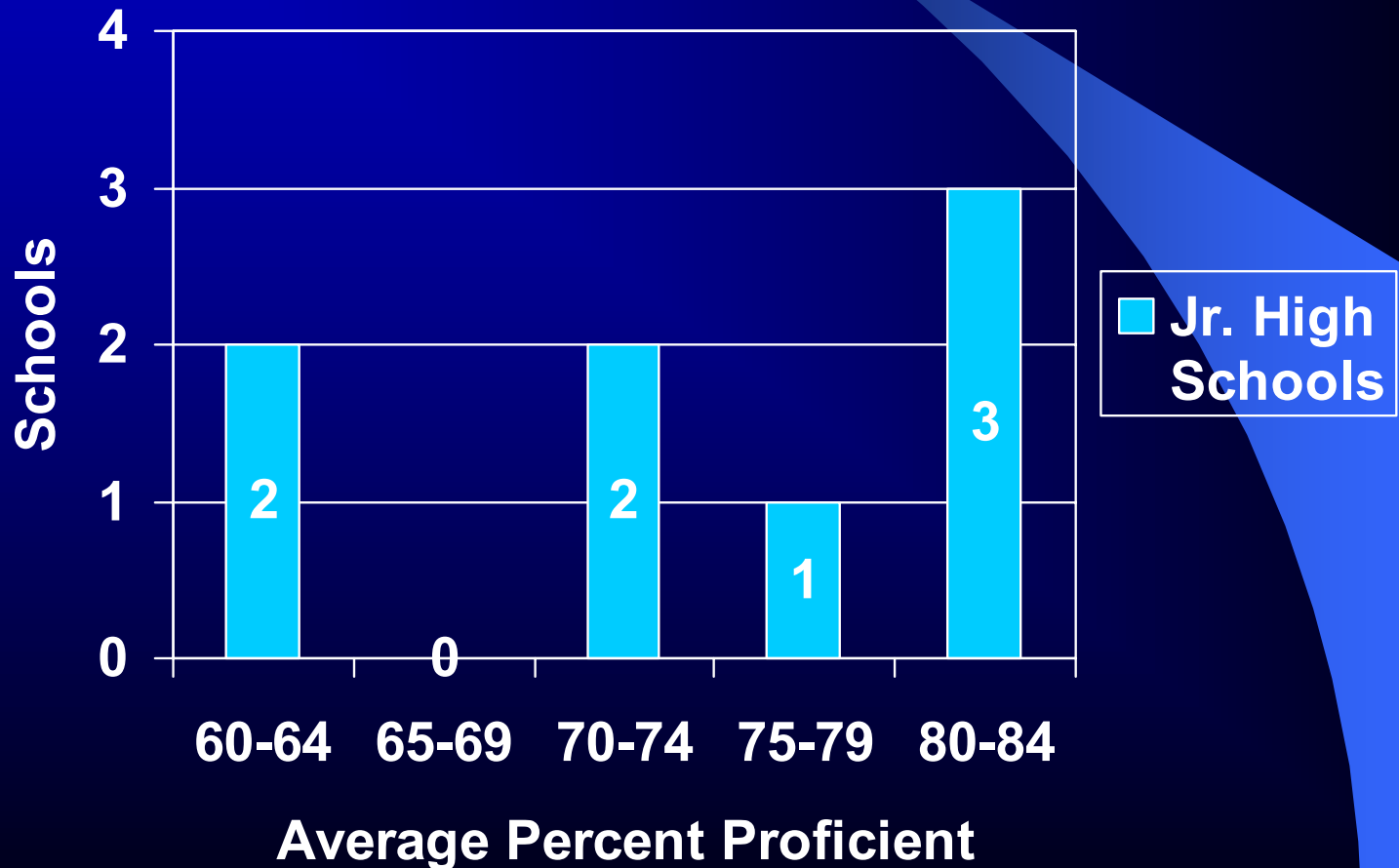


**S
E
C
O
N
D
A
R
Y

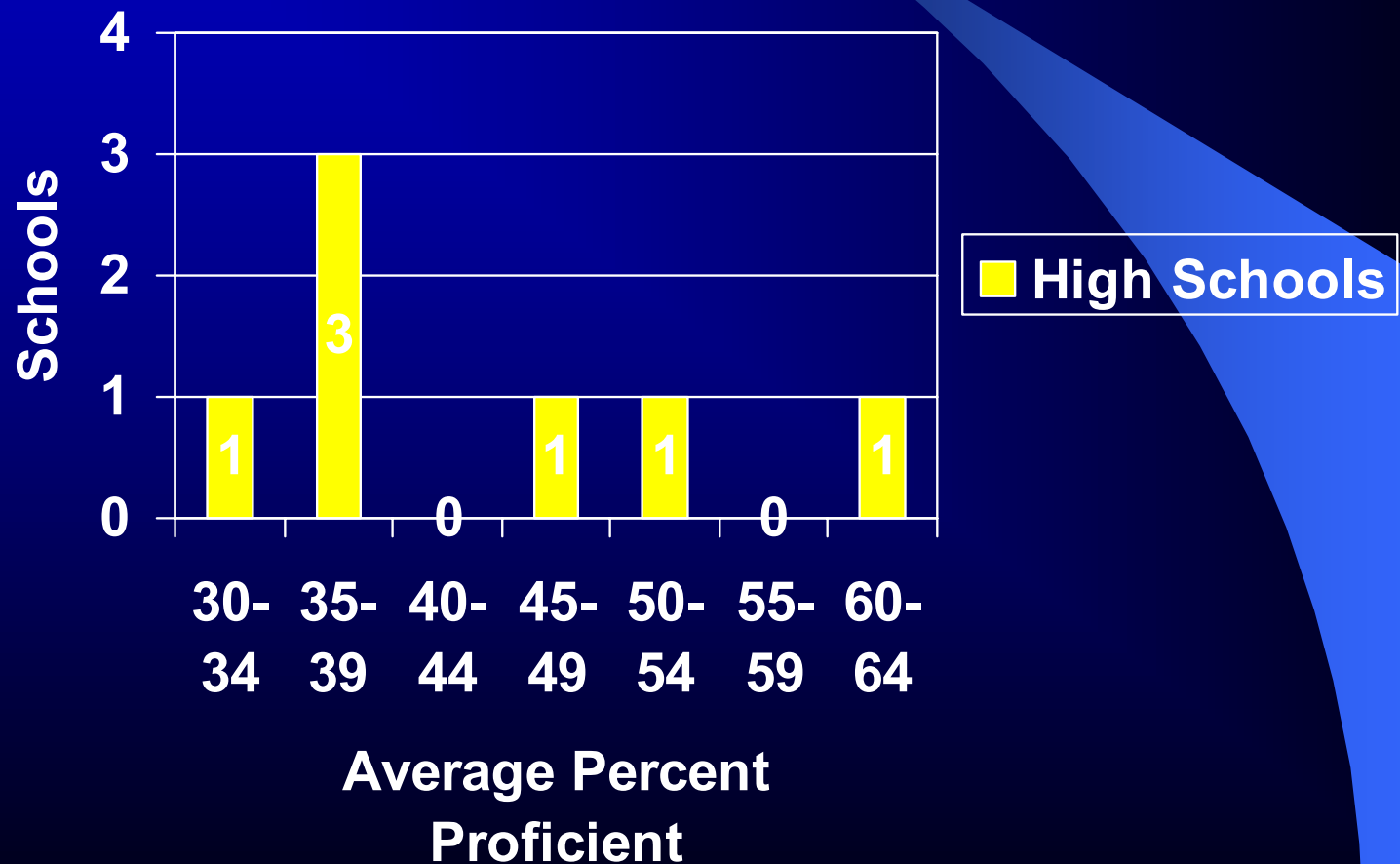
M
A
T
H**

Subject		Minimal	Partial	Near	Mastery	%Pass
Math 7	ASD	34	14	14	39	53
	Utah	27	14	14	45	59
Pre Algebra	ASD	12	13	30	45	75
	Utah	20	14	28	38	66
Algebra	ASD	16	13	33	38	71
	Utah	23	16	30	31	61
Geometry	ASD	20	13	33	35	67
	Utah	24	15	31	30	61
7 th & 8 th NCLB	ASD	11	11	28	50	78
	NCLB AYP GOAL = 57%					
High School NCLB	ASD	40	18	29	14	43
	NCLB AYP GOAL = 35%					

School Distribution— Junior High Schools, Math



School Distribution— High Schools, Math



**S
E
C
O
N
D
A
R
Y

S
C
I
E
N
C
E**

Subject		Minimal	Partial	Near	Mastery	%Pass
7th Integ. Science	ASD	3	12	30	56	86
	Utah	5	19	32	44	76
8th Integ. Science	ASD	3	16	23	59	82
	Utah	2	21	26	51	77
Earth Systems	ASD	4	29	28	39	68
	Utah	4	31	27	38	65
Biology	ASD	6	29	10	55	65
	Utah	8	33	12	48	60

Summary

Alpine students have performed higher than students at the state and national level over the last four years as measured by the Stanford 9 and Utah Core Assessments.

Research & Evaluation Website

www.alpine.k12.ut.us/depts/re

- Stanford 9 scores (including school data)
- AP scores
- ACT scores
- Utah Core tests

