



The background of the slide is a chalkboard. Two pieces of pink chalk are lying on the board, one upright and one lying on its side. There are some faint white chalk markings on the board, including a large 'A' and some curved lines. The text is overlaid on this background.

# **2004 ACT and AP Results**

**Alpine School District**

# ACT

- *English Test- 75 items, 45 minutes*
- *Math Test- 60 Items, 60 minutes*
- *Reading Test- 40 Items, 35 minutes*
- *Science Test – 40 Items, 35 minutes*

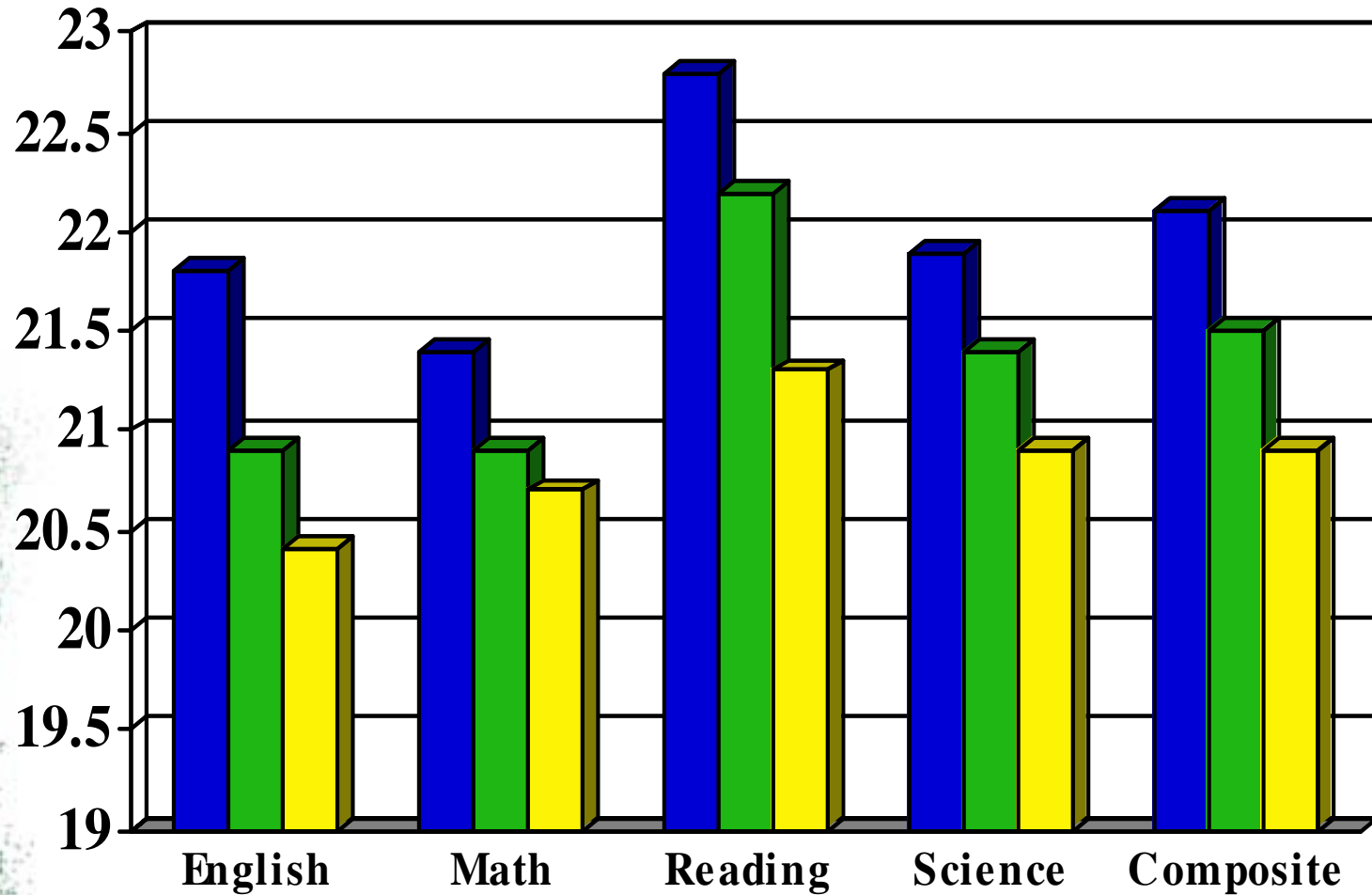




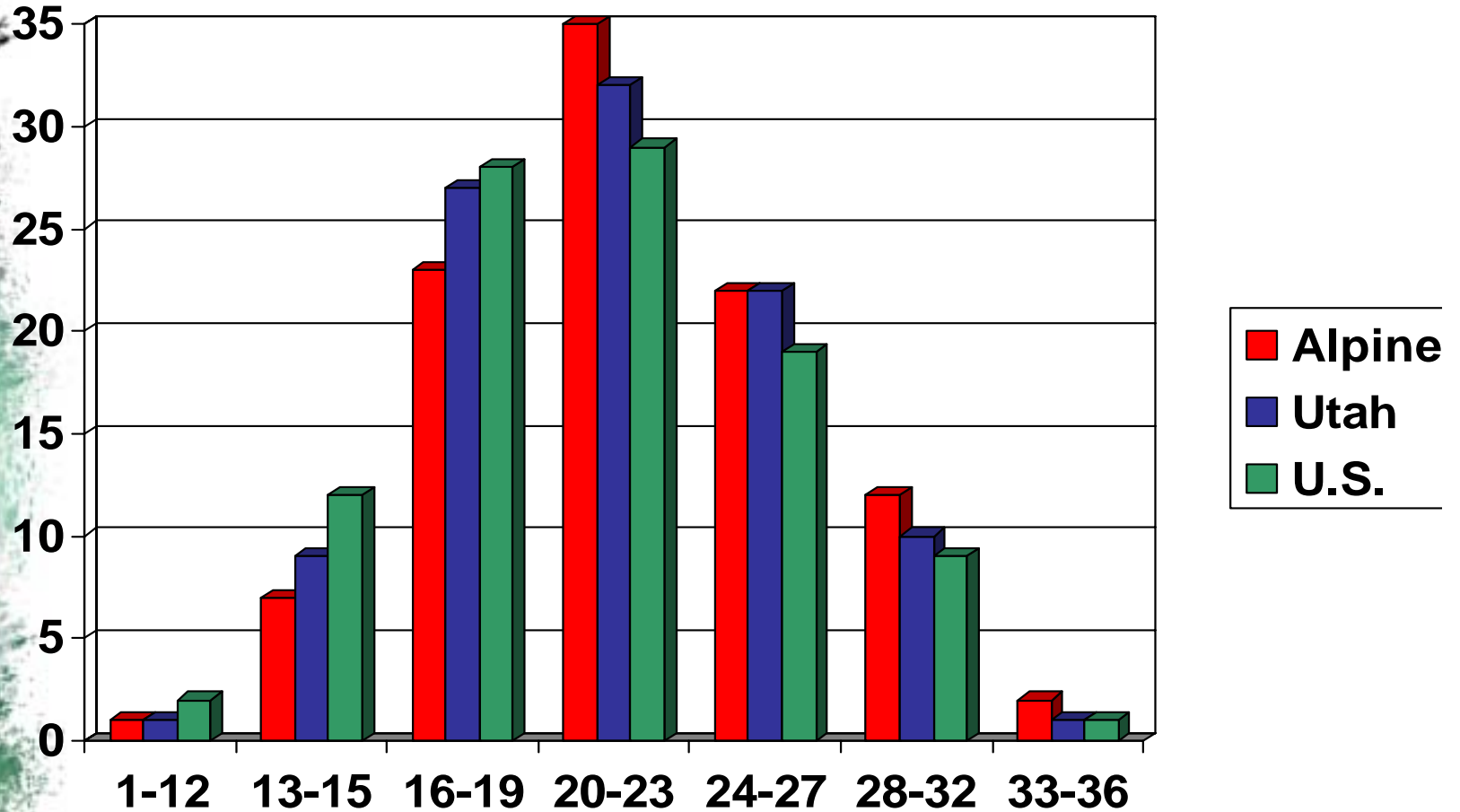
# ACT

- **Scores reported: English, Math, Reading, Science, and Composite.**
- **Scores range from 1 to 36.**
- **Additional information provided:**
  - *Student course selection*
  - *Student satisfaction*
  - *Student background information*
  - *Student educational plans*

# 2004 ACT Scores

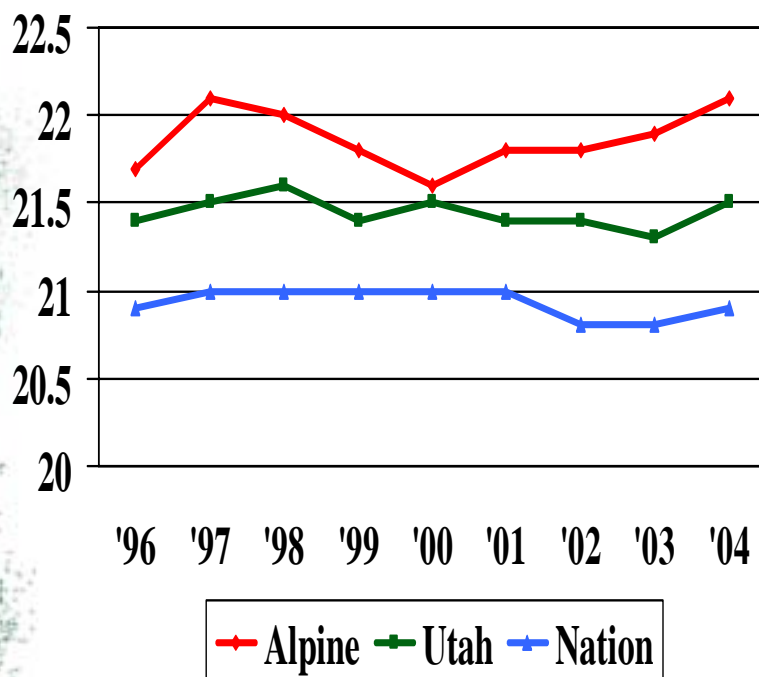


# ACT Score Distribution

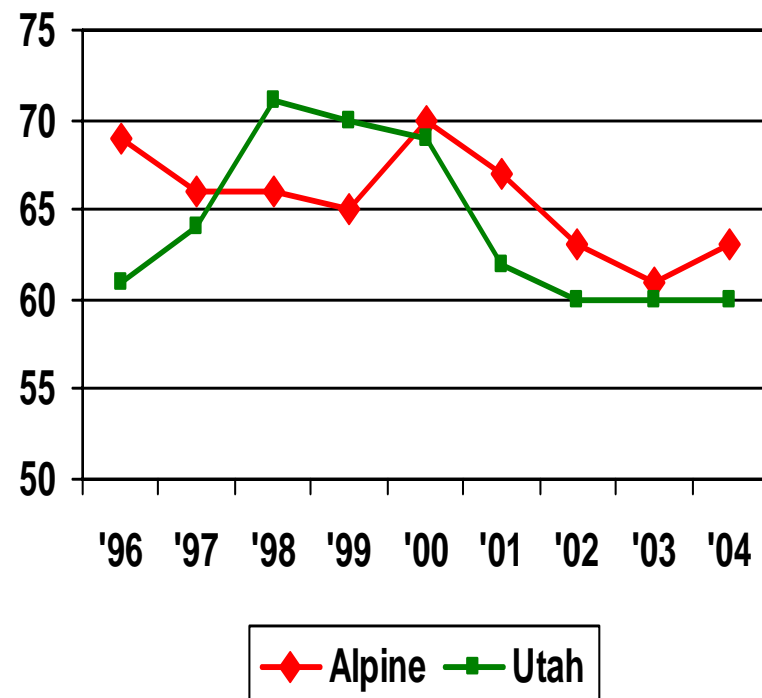


# ACT TREND DATA

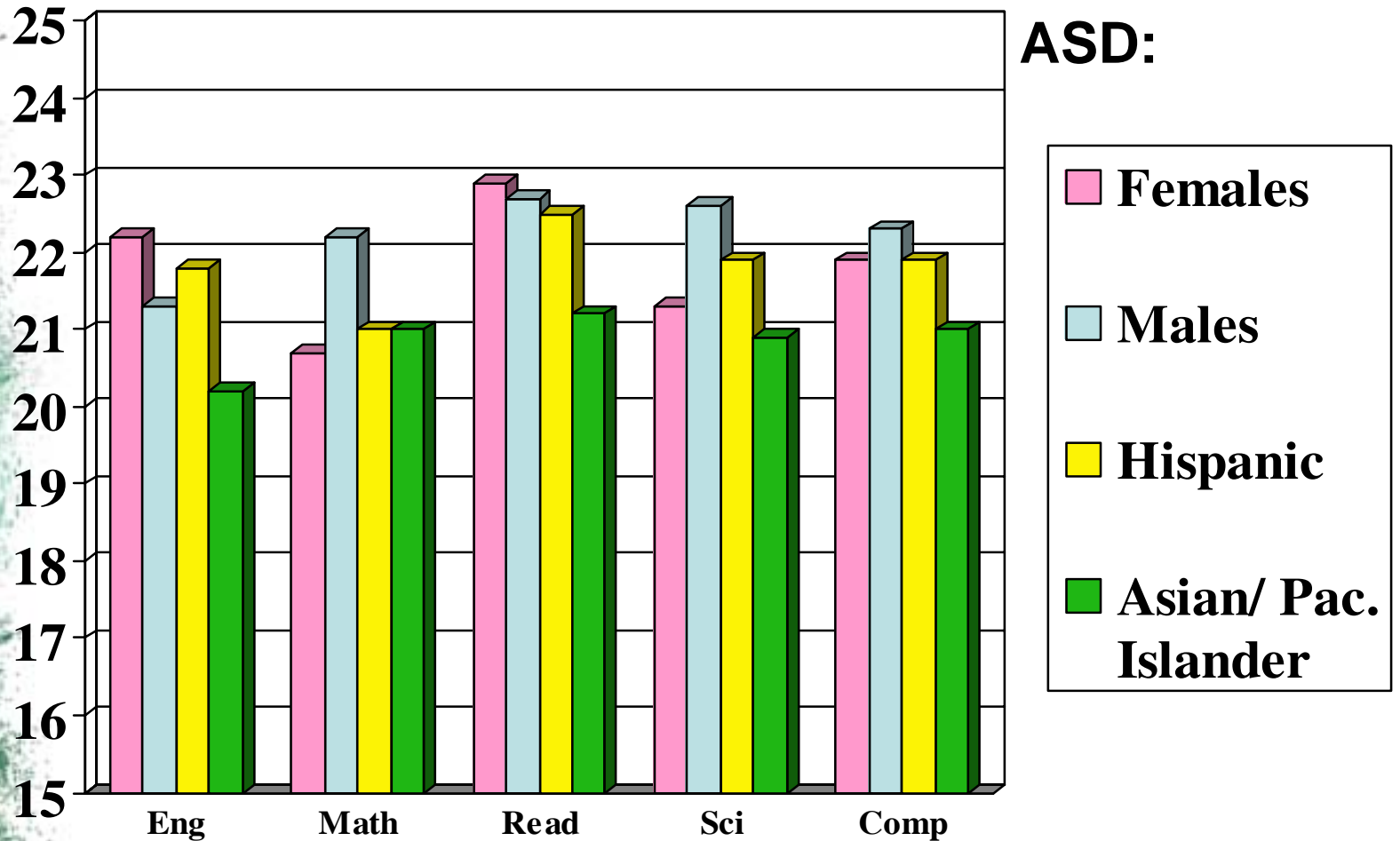
## SCORE



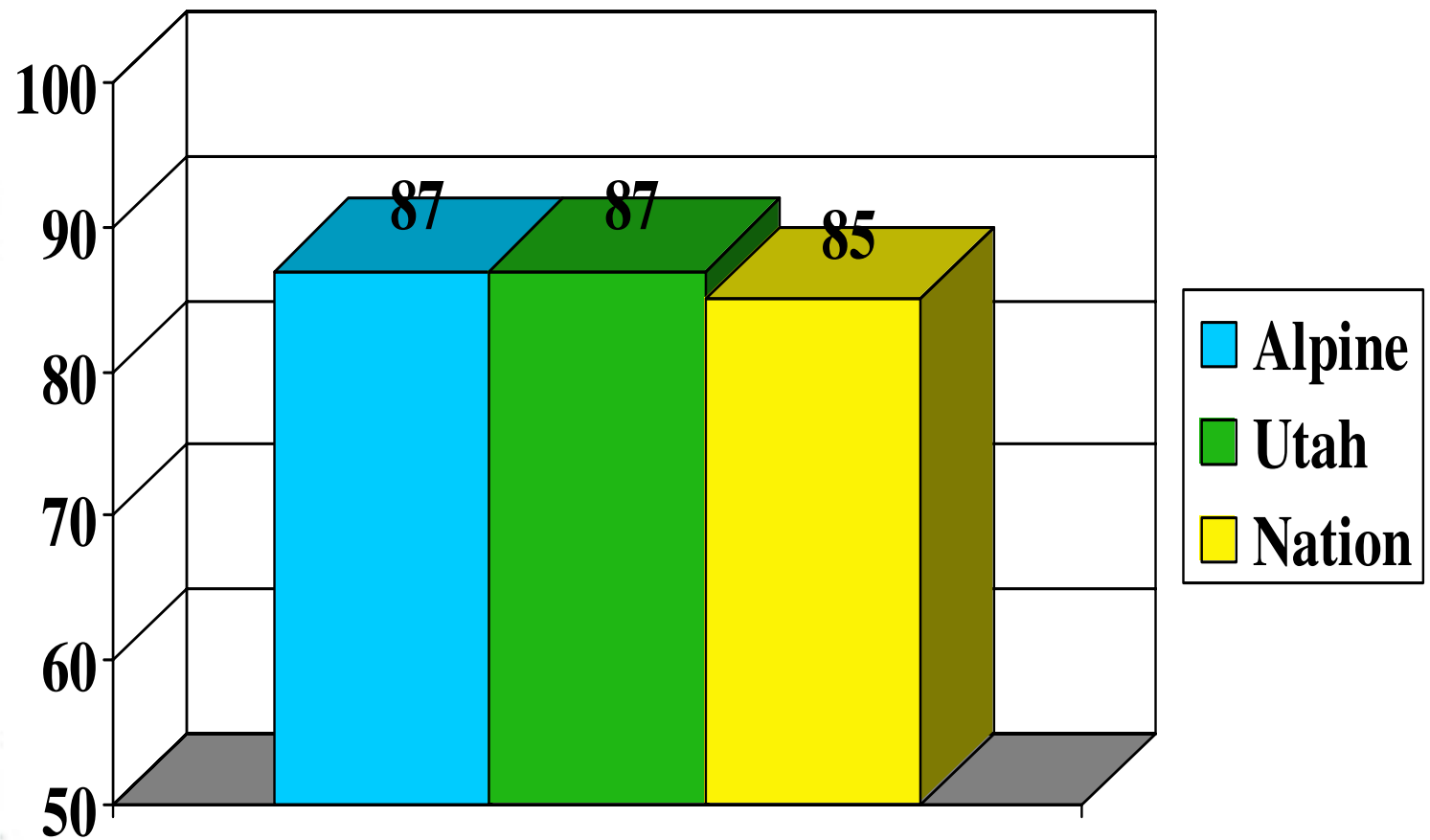
## PARTICIPATION RATE



# Gender and Ethnicity



# Student Satisfaction





# 2004 ACT Summary

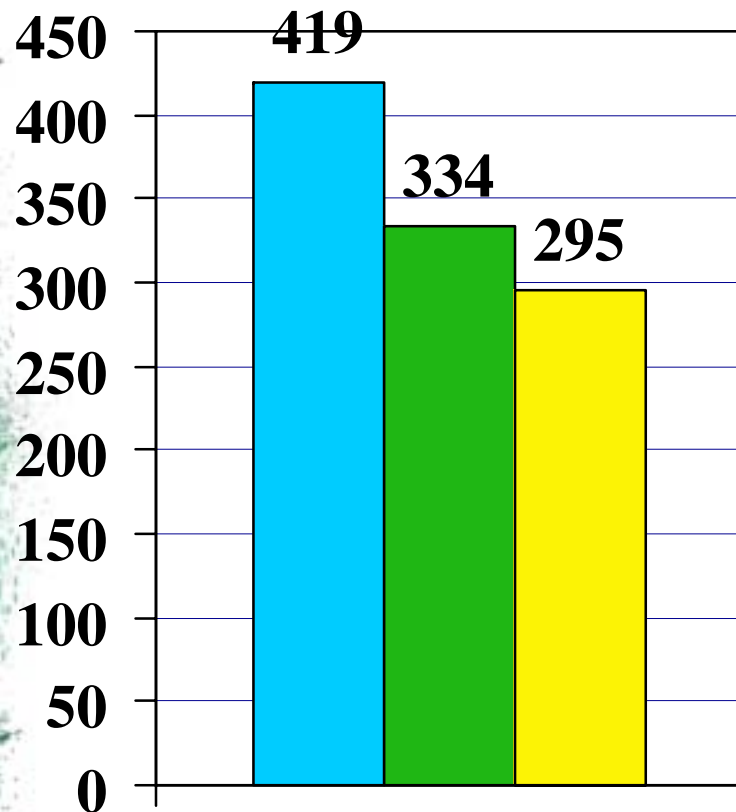
- Alpine continues to score high in all ACT areas.
- Alpine scored higher than Utah and the Nation in all areas.
- Both scores and participation rates for Alpine increased.



# 2004 AP Exams

- Sponsored by the College Entrance Examination Board (SAT).
- Provides additional external assessment data.
- Scored on a 1 to 5 scale. Scores of 3-5 earn college credit.
- 35 subjects in 7 areas.

# AP Participation Rate



All AP Exams

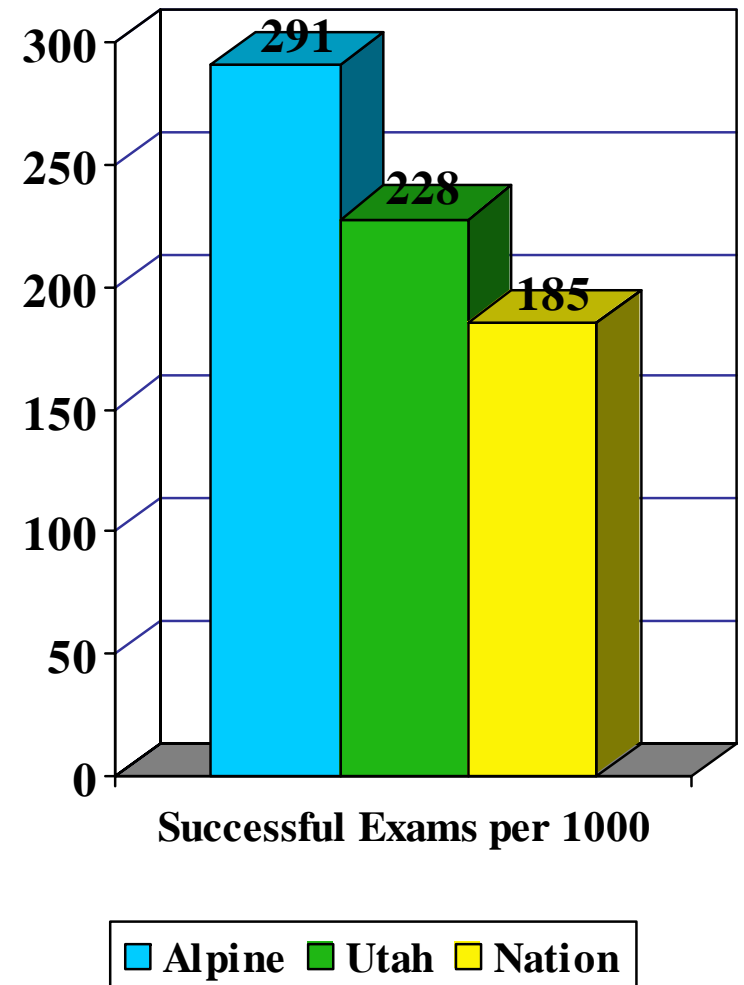
■ Alpine ■ Utah ■ Nation

Exams per 1000 students

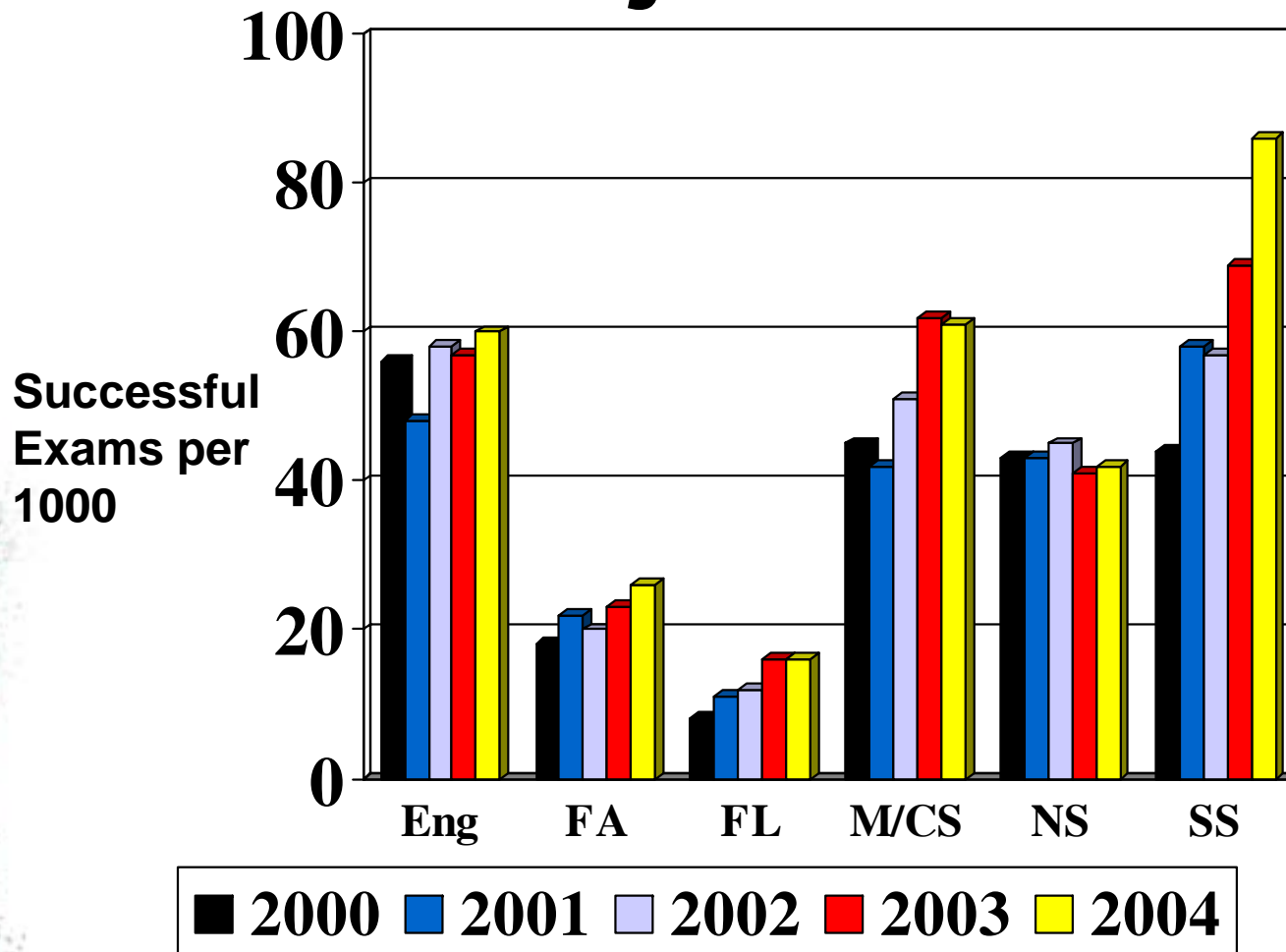
- Utah has one of the highest participation rates in the nation.
- Alpine is significantly higher than Utah.

# AP Success Rate

Alpine students are more successful than students in Utah and in the Nation.



# Subject Areas



**Eng:** English

**FL:** Foreign Language

**NS:** Natural Science

**FA:** Fine Arts

**M/CS:** Math/Computer Science

**SS:** Social Science



# College Credit

*AP Credit*                      *6,034*

*Concurrent  
Enrollment*                      *14,872*

*Total*                                      *20,906*



# AP Conclusions

- *Alpine School District students continue to surpass the State and the U.S. in academic excellence as measured by the Advanced Placement Examinations.*
- *Alpine School District AP participation rates and pass rates continue an upward trend*